



## FEATURES

- Fully Assembled from the Factory
- Can be Mullled into Three-lite Configurations at 30° or 45°
- Available in Double Hung, Casement or Picture Combinations



Limited Lifetime Warranty (Window Units)



Energy Efficient Product



REPLACEMENT

30°



45°



# BOW WINDOWS



## FEATURES

- Create a Dynamic View from the Inside with a Multi-lite Bow Window
- Can be Mullled with 3 or More Lites at 10°
- Available in Double Hung, Casement or Picture Combinations



Limited Lifetime Warranty (Window Units)



Energy Efficient Product



REPLACEMENT

3 Lite



4 Lite



5 Lite



6 Lite





# BAY & BOW WINDOW FEATURES



## Superior Craftsmanship

Real wood trim, Rabbet connection at the jambs.



## Interior Casing

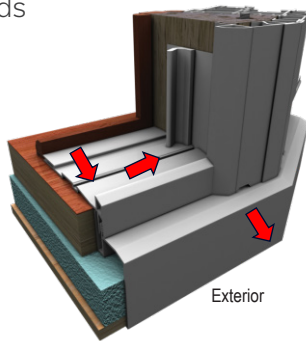
Available as pre-cut or un-cut trim pieces, in three widths: 2 1/4", 3 1/2", & 5".

## Trim Packages



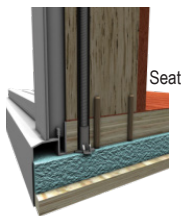
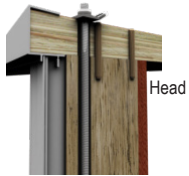
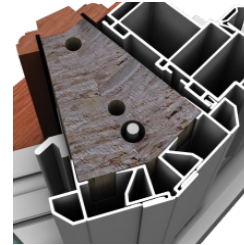
## Weeped Panning System

A back up system that aids against water infiltration. The sloped sill and hefty water chambers let water flow away from the interior.



## Hollow Profiles

Snapping together profiles creates a water tight seal and a thermal break that eliminates moisture and rot.



## Dual Mullion System

Laminated strand lumber creates a thermal break that fills the ambient air space surrounding the steel rod. This will not condensate.

The system creates a clamped connection of head, seat and mullions that will never separate and evenly distributes load from the bottom to the hanger system. Every unit comes insulated with 1" thick Dow polystyrene foam and a 2 1/4" thick, waterproof and laminated seat board.

## Interior Prefinishes Choices



White Paint



Beige Paint



Light Cherry Stain



Dark Cherry Stain



Walnut Stain



Light Oak Stain



Dark Oak Stain



Mahogany Stain



Maple Stain

## Seat Board Choices



White



Desert Sand



Venetian Sand



Platinum Granite



Graphite Granite

Bay and Bow windows are built to custom opening sizes. They can accommodate any wall thickness on any 16<sup>th</sup> inch increment, and are constructed using furniture grade 1 1/4" hardwood plywood. Bay and Bow windows use Red Oak or White Birch veneers. (Oak for Stain, Birch for Paint)